

# High Quality Reagents for Live Cell Analysis

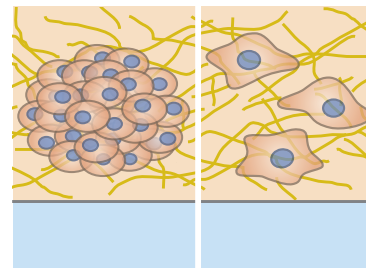


## Collagen Type I, Rat Tail for 3D Cell Culture

Collagen I is used in 3D cell culture for simulating the extracellular matrix (ECM) in various applications, or as a coating for promoting cell attachment.

### Your Benefits:

- A non-pepsinized, native collagen solution with the highest quality grade
- Highly standardized manufacturing with stringent quality control
- Fast polymerization for optimal cell distribution in 3D gels



*Examples showing 3D cultivation of a spheroid  
or single cells in a Collagen Type I gel matrix.*

Find detailed information and more reagents at: [ibidi.com](https://www.ibidi.com)

# High Quality Reagents for Live Cell Analysis



## ibidi Mounting Medium for Immunofluorescence Assays

- Ready-to-use for immunofluorescence assays using widefield fluorescence and confocal microscopy
- DAPI counterstaining and mounting combined in one single step; also available without DAPI
- Compatible with all ibidi labware



## ibidi Freezing Medium Classic

- A cell freezing medium with extremely high recovery rates
- No preliminary or sequential freezing required
- Serum-free – contains Bovine Serum Albumin



Find detailed information and more reagents at: [ibidi.com](https://www.ibidi.com)

