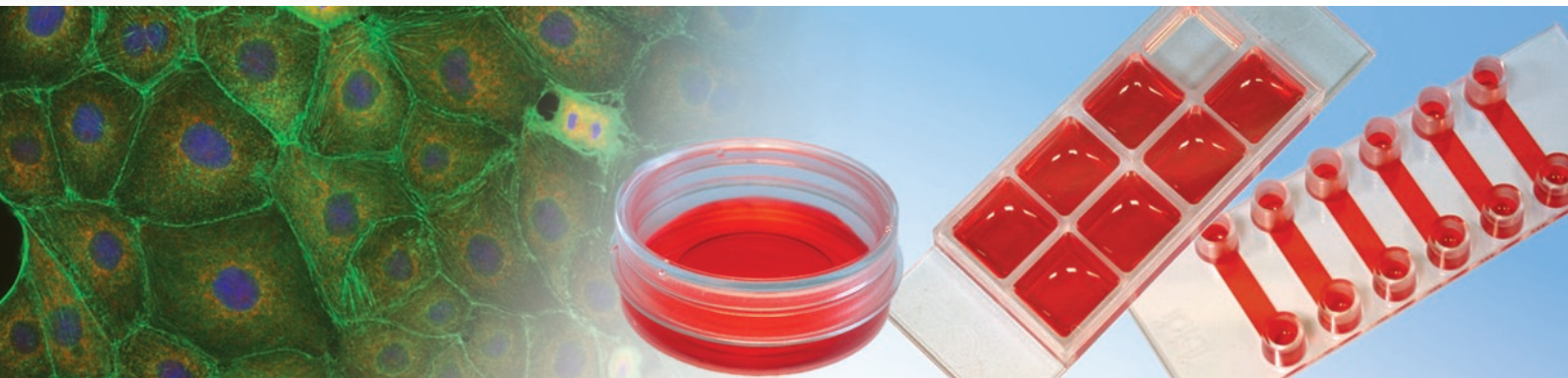


# Immunofluorescence

All-in-One Chambers for  
Cultivation – Fixation – Staining – Imaging



✓ **Fast and Easy Sample Preparation**

All-in-one chamber simplifies your immunofluorescence protocol

✓ **Homogeneous Cell Distribution**

Cell densities are independent of handling during cell seeding

✓ **Cost-Effective Experiments**

A low amount of cells and reagents is needed

✓ **High Resolution Imaging**

Wide-field fluorescence, confocal imaging, FRAP – FRET – FLIM,  
and undisturbed phase contrast

Complementary equipment for immunofluorescence experiments:



*LifeAct*

**F-Actin Visualization**

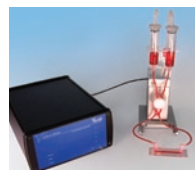


*Transfection Kits*



*μ-Slide 1 Luer*

**Perfusion**



*ibidi Pump System*



*Mounting Medium*



*Freezing Medium*

**Cell Microscopy**

# All-in-One Chambers for Cultivation – Fixation – Staining – Imaging

## Channel Formats

The ibidi channel  $\mu$ -Slides are ideal for an exact exchange of small amounts of reagents.  $\mu$ -Slides VI<sup>0.4</sup> are perfectly suited for general immunofluorescence assays, whereas the  $\mu$ -Slide I<sup>0.2</sup> Luer allows for immunofluorescence in low density cultures and flow experiments.

## Open Well Formats

The ibidi  $\mu$ -Slide 8 well and the  $\mu$ -Dish<sup>35 mm, high</sup> allow for the use of standard immunofluorescence protocols without cover slips in an all-in-one chamber. After staining the sample can be observed through the cover slip-like bottom, using high resolution microscopy.

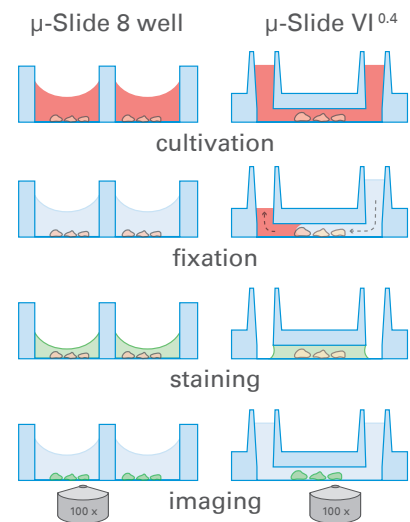
## Removable Chambers

These products contain a silicon gasket which has chambers for individual cell culture, and incubation, conditions. The ibidi Culture-Insert StemCell allows for extremely small volumes. The removable  $\mu$ -Chamber 12 well is perfect for the long-term storage of samples.

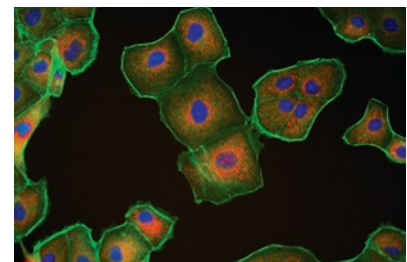
More than **400 publications**, using ibidi products for immunofluorescence assays, demonstrate these advantages.

For detailed immunofluorescence protocols including a how-to movie about using the  $\mu$ -Slide VI<sup>0.4</sup> go to:







[www.ibidi.com/applications](http://www.ibidi.com/applications).



*ibidi  $\mu$ -Slides reduce the number of experimental steps needed in immunofluorescence assays*



*MDCK cell line cultured in  $\mu$ -Slide VI<sup>0.4</sup>*

	Channel Formats – All-in-One		Open Well Formats – All-in-One		Removable Chambers	
	 $\mu$ -Slide VI <sup>0.4</sup>	 $\mu$ -Slide I <sup>0.2</sup> Luer	 $\mu$ -Slide 8 well	 $\mu$ -Dish <sup>35mm, high</sup>	 Culture-Insert StemCell	 $\mu$ -Chamber 12 well
Volume staining reagent per well or channel	25 $\mu$ l	50 $\mu$ l	100 $\mu$ l	400 $\mu$ l	5 $\mu$ l	100 $\mu$ l
Growth area per well or channel	0.6 cm <sup>2</sup>	2.5 cm <sup>2</sup>	1.1 cm <sup>2</sup>	3.5 cm <sup>2</sup>	0.03 cm <sup>2</sup>	0.56 cm <sup>2</sup>
Culture volume	150 $\mu$ l	170 $\mu$ l	300 $\mu$ l	2 ml	10 $\mu$ l	250 $\mu$ l
Number of independent tests	6	1	8	1	4	12
Application examples (IF = Immunofluorescence)	IF, after cell culture and incubation	IF, at low density cultures and flow experiments	IF, after cell culture and incubation	IF, after cell culture and incubation	IF, in very small volumes after culture and incubation	IF, and long-term storage of samples
Catalog number	80606 (ibiTreat)	80166 (ibiTreat)	80826 (ibiTreat)	81156 (ibiTreat)	80406 (ibiTreat)	81201 (glass slide)

**FREE SAMPLES:** [www.ibidi.com/freesamples](http://www.ibidi.com/freesamples)